

Recreation in Czech National Parks: tourism intensity vs. vulnerability of priority areas

RaOP 2026 12th May

Tomáš Janík,

Vladimír Zýka, Martin Erlebach, Dana Fialová, Tereza Kůsová, Jiří Vágner, Jan Pergl, Jiří Sádlo, Josef Kutlvašr, Klára Kušková, Michaela Vítková, Barbora Mrkvová, Dušan Romportl



Přírodovědecká fakulta
Univerzita Karlova



**Výzkumný
ústav pro
krajinu**



Přírodovědecká fakulta
Univerzita Karlova



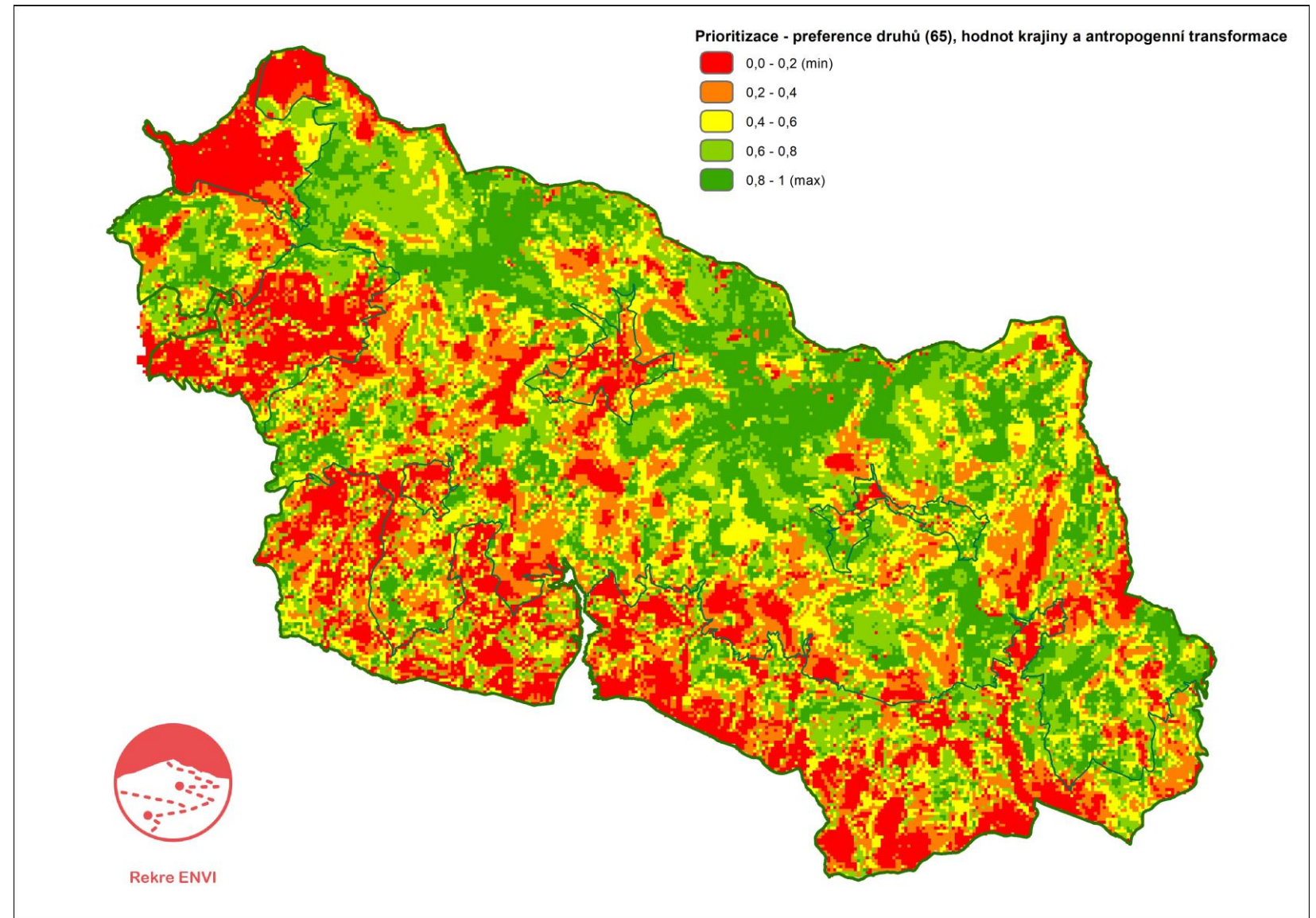
Introduction

- Increasing pressure on protected areas
- Analyzing spatial patterns of naturally valuable and vulnerable areas and recreation pressure
 - Prioritization
 - Fragmentation
 - Invasions
 - Characteristics of municipalities
- Pressure grows especially in national parks since the COVID-19 pandemic
- Finishing RekreENVI - complex assessment of impact of recreational use of the Krkonoše National Park project
- Starting Swiss-Czech Cooperation Programme, project Responsibly to nature: Partnership for National Parks



Prioritization

- Integration of habitat suitability models, valuable habitats and other natural features



Fragmentation

- Integration of built-up areas, roads and intensity on touristic paths

Prostorové aspekty rekreační zátěže

Intenzita pohybu návštěvníků

heatmap CELKEM intenzita využívání turistických tras

(intenzita zátěže) (data StravaMetro)

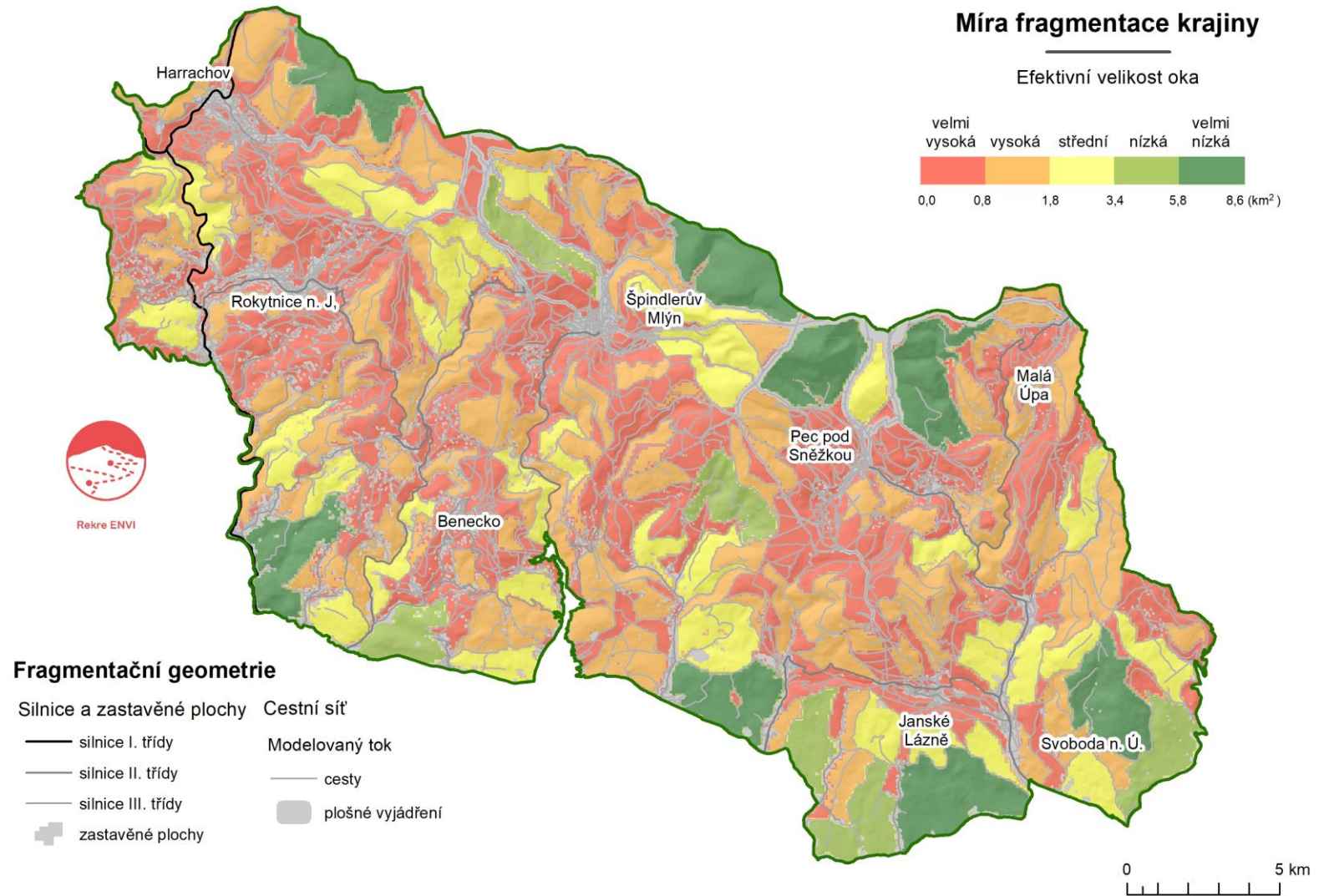


RekreENVI

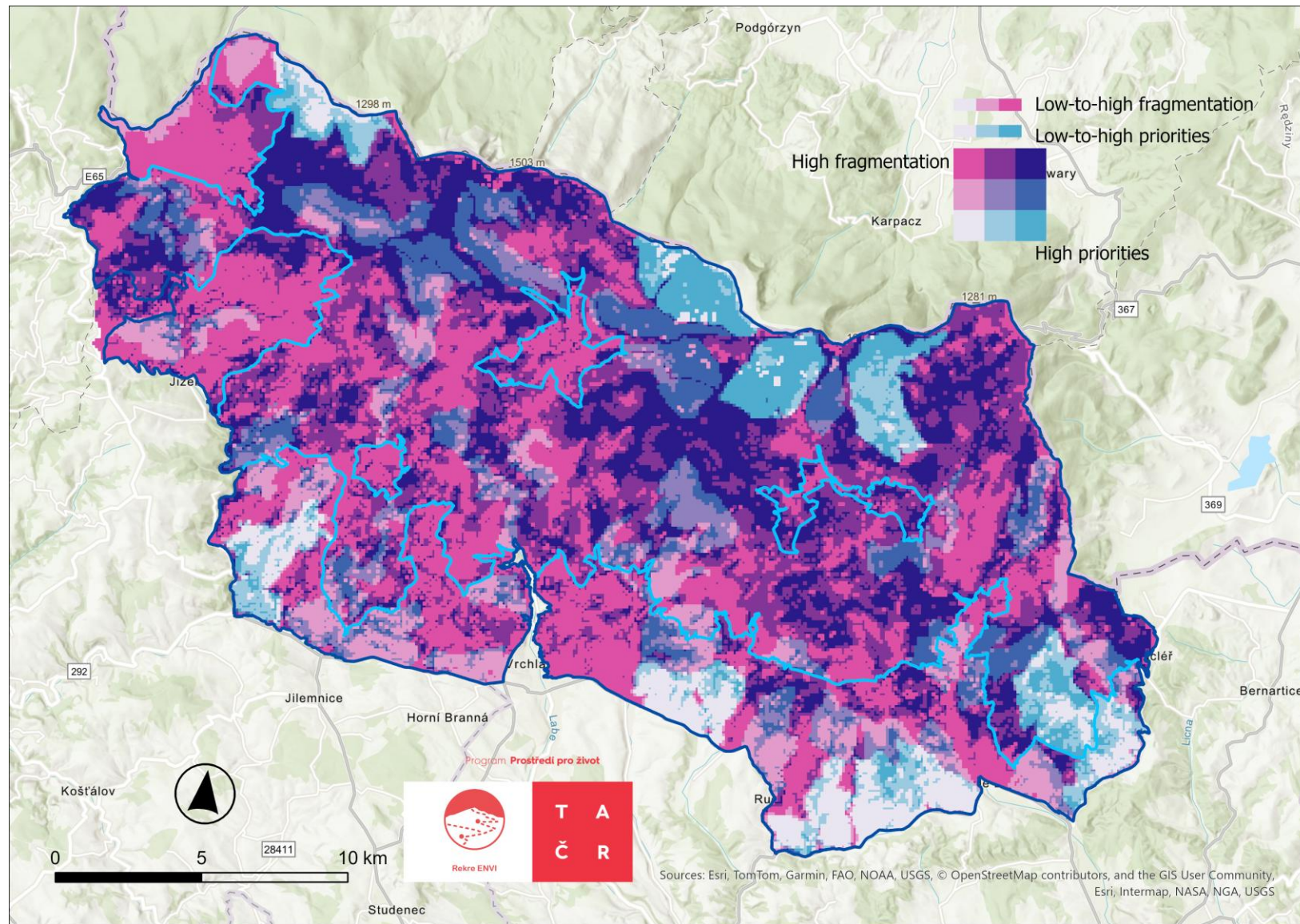


Fragmentation

- Integration of built-up areas, roads and intensity on touristic paths

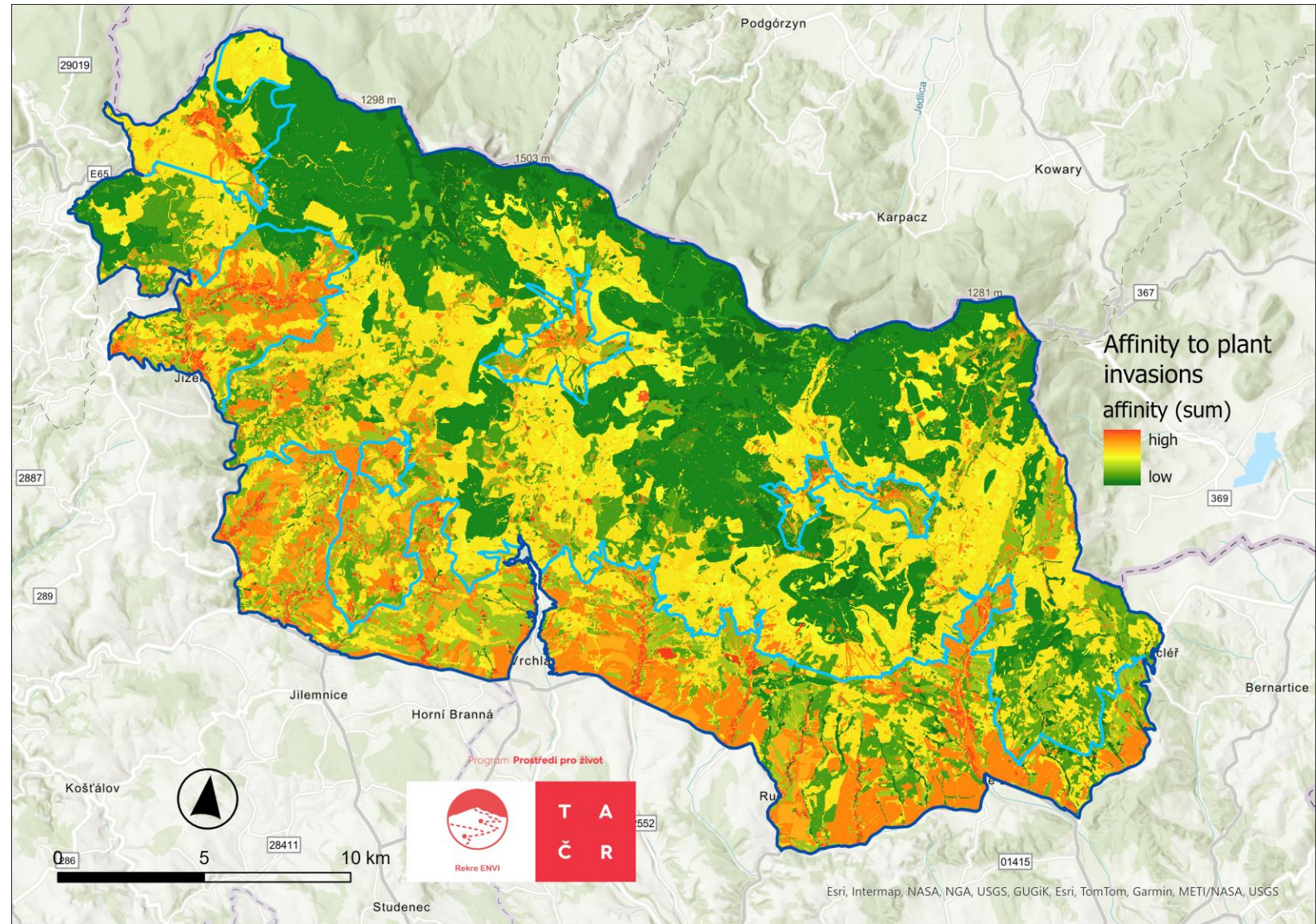


Priorities vs. fragmentation



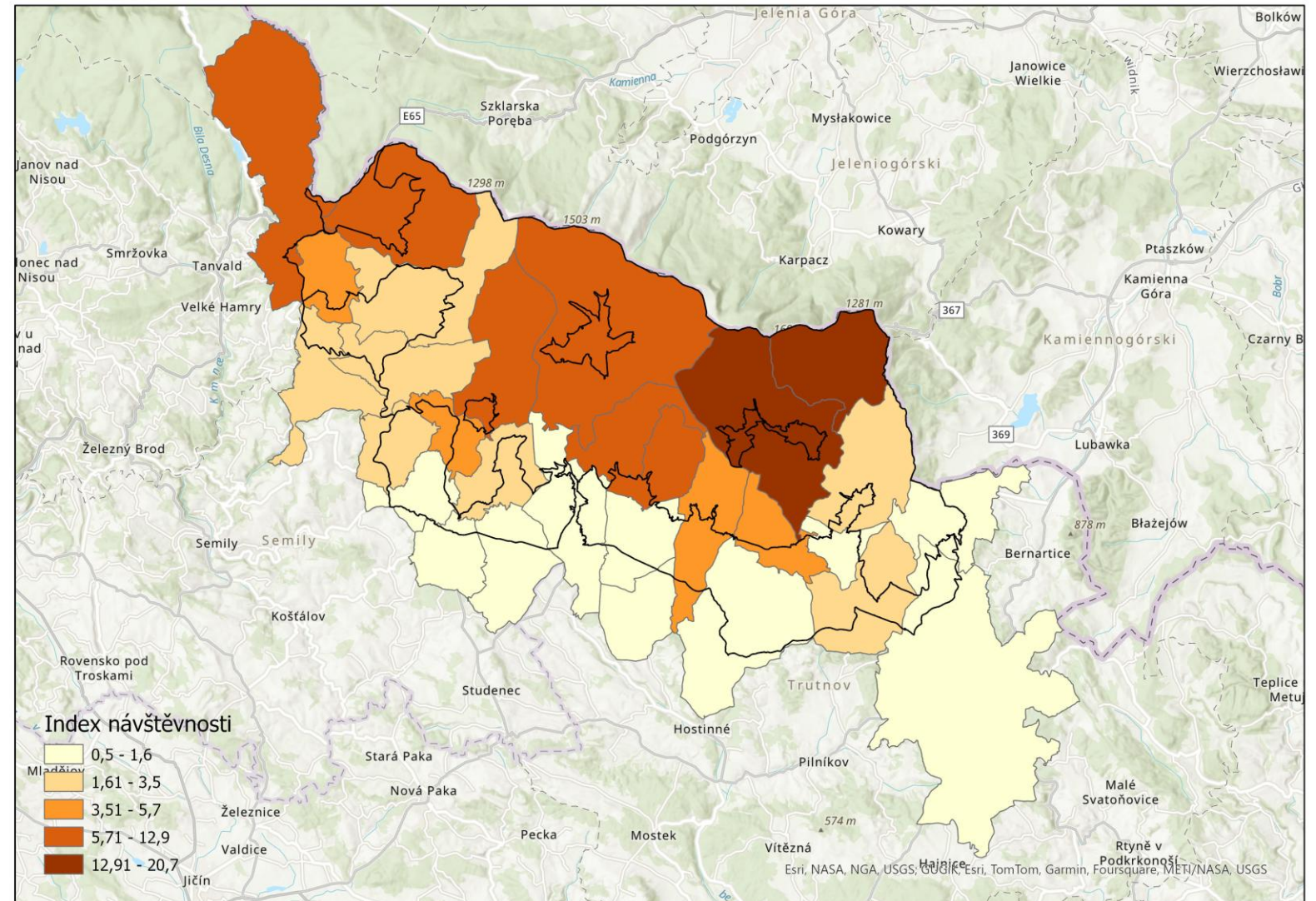
Plant invasions

- Affinity based on disturbances, connectivity, landscape features, cultural influence, management, succession



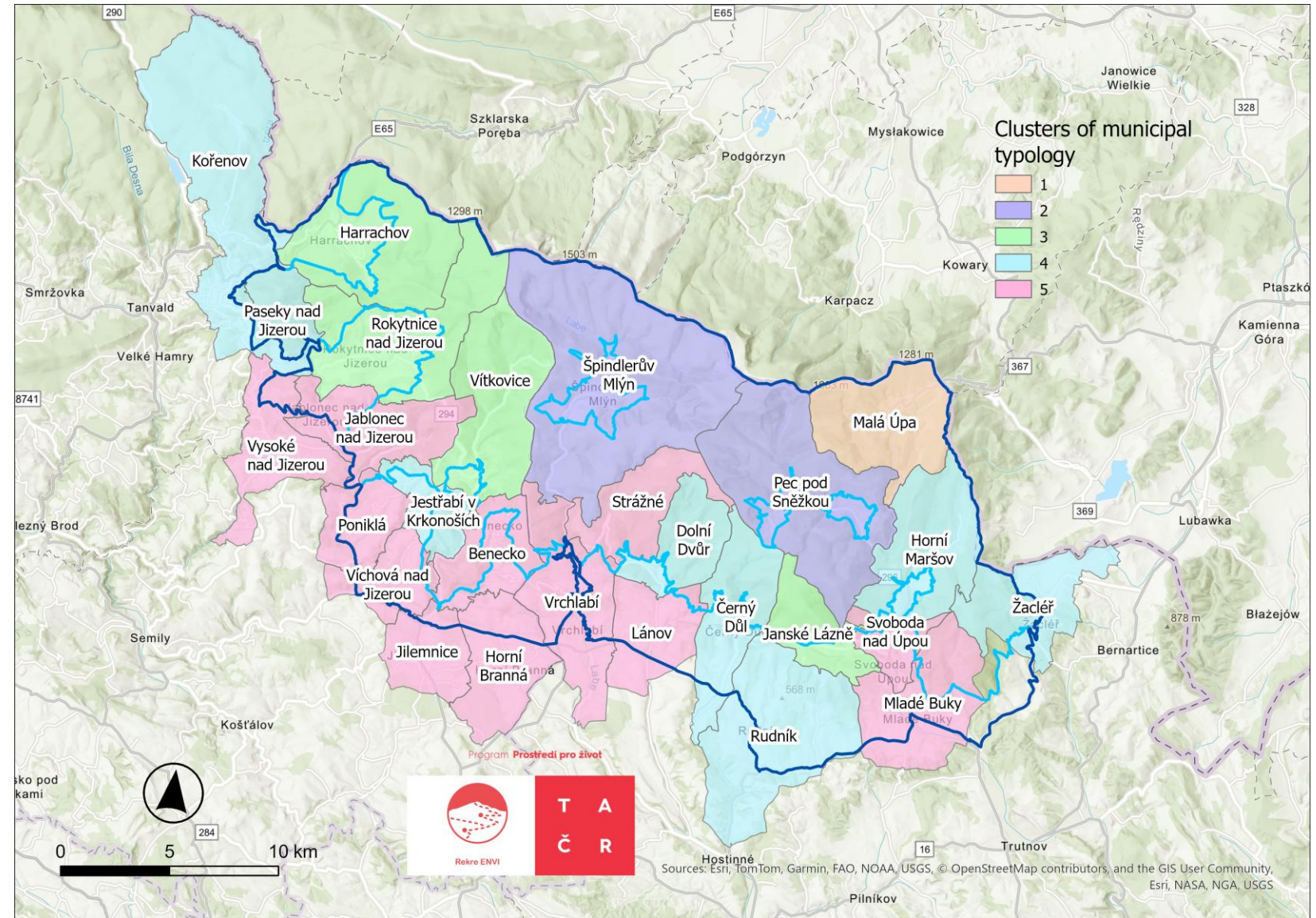
Municipalities

- Visitor index based on mobile phone data



Municipalities

- Typology based on socioeconomic characteristics



Conclusion

- National parks are heavily influenced by visitor pressure
- Clear gradients of anthropogenic pressures and natural qualities and threats of invasions
- Spatially explicit data can support appropriate management of the NPs
- Similar analyses will be conducted in all Czech national parks in the coming years, including transboundary areas





Thank you for your attention